

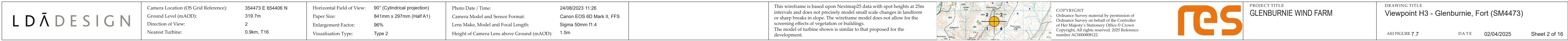
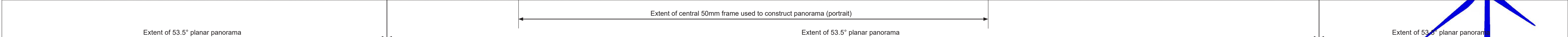
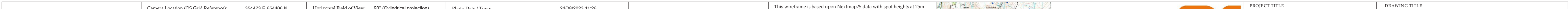


|                  |  |  |  |  |  |   |  |  |   |  |   |                                       |   |                    |               |
|------------------|--|--|--|--|--|---|--|--|---|--|---|---------------------------------------|---|--------------------|---------------|
| <b>LDĀDESIGN</b> |  | Camera Location (OS Grid Reference):<br>Ground Level (mAOD):<br>Direction of View:<br>Nearest Turbine: | 354473 E 654406 N<br>319.7m<br>1<br>0.9km, T16 | Horizontal Field of View:<br>Paper Size:<br>Enlargement Factor:<br>Visualisation Type: | 90° (Cylindrical projection)<br>841mm x 297mm (Half A1)<br>96%<br>Type 2 | Photo Date / Time:<br>Camera Model and Sensor Format:<br>Lens Make, Model and Focal Length:<br>Height of Camera Lens above Ground (mAOD): | 24/08/2023 11:26<br>Canon EOS 6D Mark II, FFS<br>Sigma 50mm f1.4<br>1.5m | This wireframe is based upon Nextmap25 data with spot heights at 25m intervals and does not precisely model small scale changes in landform or sharp breaks in slope. The wireframe model does not allow for the screening effects of vegetation or buildings. The model of turbine shown is similar to that proposed for the development. |  | <p>COPYRIGHT</p> <p>Ordnance Survey material by permission of Ordnance Survey on behalf of the Controller of Her Majesty's Stationary Office © Crown Copyright. All rights reserved. 2025 Reference number AC0000808122.</p> |  | PROJECT TITLE<br>GLENBURNIE WIND FARM | DRAWING TITLE<br>Viewpoint H3 - Glenburnie, Fort (SM4473)<br><br>AEI FIGURE 7.7 | DATE<br>02/04/2025 | Sheet 1 of 16 |
|------------------|--|--|--|--|--|---|--|--|---|--|---|---------------------------------------|---|--------------------|---------------|

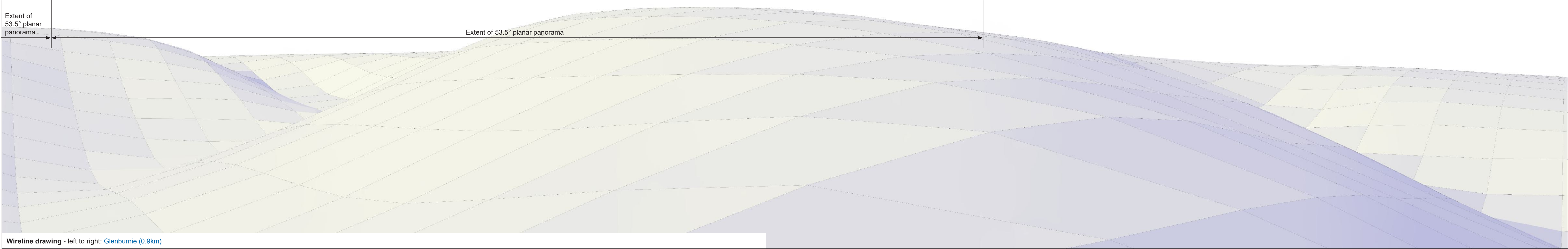








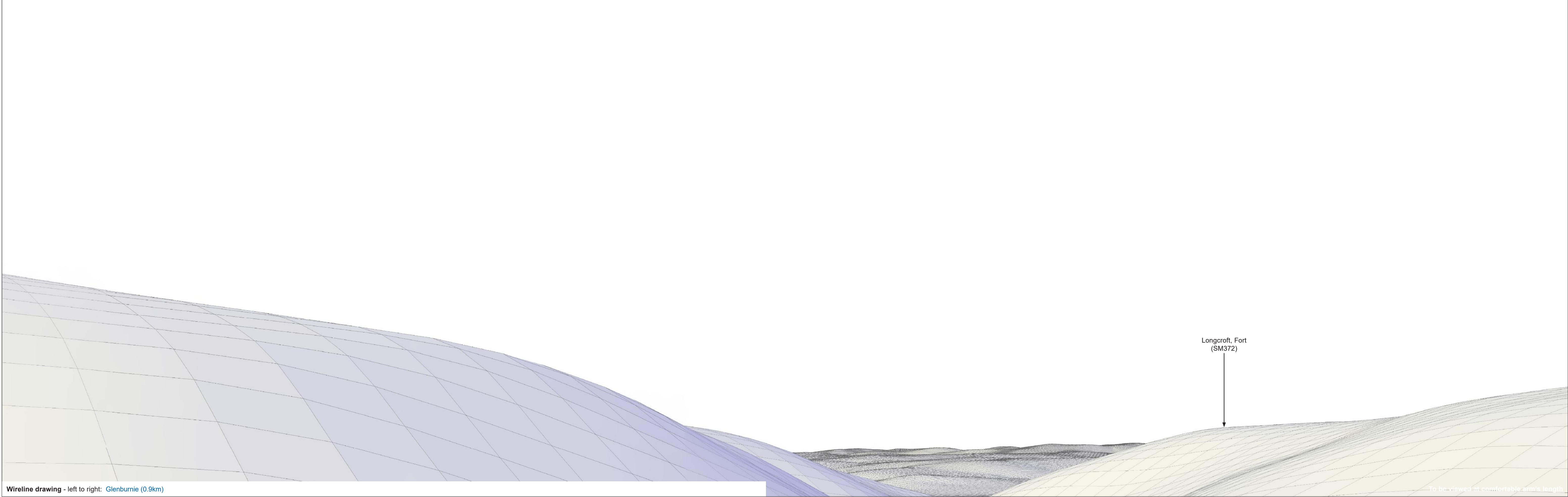
Baseline photograph

This image provides landscape and visual context only





Wireline drawing - left to right: [Glenburnie \(0.9km\)](#)

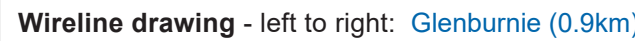
|                  |  |  |  |  |   |  |  |   |  |   |                                       |   |                    |               |
|------------------|--|--|--|--|---|--|--|---|--|---|---------------------------------------|---|--------------------|---------------|
| <b>LDĀDESIGN</b> | Camera Location (OS Grid Reference):<br>Ground Level (mAOD):<br>Direction of View:<br>Nearest Turbine: | 354473 E 654406 N<br>319.7m<br>4<br>0.9km, T16 | Horizontal Field of View:<br>Paper Size:<br>Enlargement Factor:<br>Visualisation Type: | 90° (Cylindrical projection)<br>841mm x 297mm (Half A1)<br>96%<br>Type 2 | Photo Date / Time:<br>Camera Model and Sensor Format:<br>Lens Make, Model and Focal Length:<br>Height of Camera Lens above Ground (mAOD): | 24/08/2023 11:26<br>Canon EOS 6D Mark II, FFS<br>Sigma 50mm f1.4<br>1.5m | This wireframe is based upon Nextmap25 data with spot heights at 25m intervals and does not precisely model small scale changes in landform or sharp breaks in slope. The wireframe model does not allow for the screening effects of vegetation or buildings. The model of turbine shown is similar to that proposed for the development. |  | <p>COPYRIGHT</p> <p>Ordnance Survey material by permission of Ordnance Survey on behalf of the Controller of Her Majesty's Stationary Office © Crown Copyright. All rights reserved. 2025 Reference number AC0000808122.</p> |  | PROJECT TITLE<br>GLENBURNIE WIND FARM | DRAWING TITLE<br>Viewpoint H3 - Glenburnie, Fort (SM4473)<br><br>AEI FIGURE 7.7 | DATE<br>02/04/2025 | Sheet 4 of 16 |
|------------------|--|--|--|--|---|--|--|---|--|---|---------------------------------------|---|--------------------|---------------|



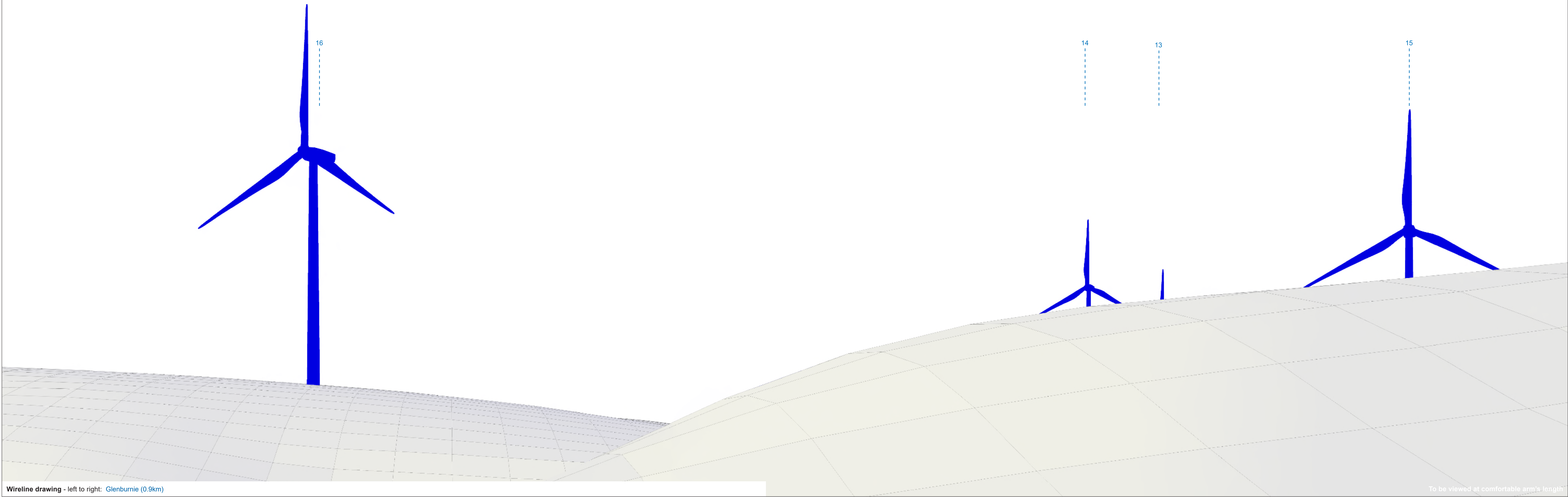
Wireline drawing - left to right: [Glenburnie \(0.9km\)](#)

To be viewed at comfortable arm's length



|             |                                      |                   |                           |                           |  |      |                            |                   |   |   |                                       |   |
|-------------|--------------------------------------|-------------------|---------------------------|---------------------------|--|------|----------------------------|-------------------|---|---|---------------------------------------|---|
| LD̄A DESIGN | Camera Location (OS Grid Reference): | 354473 E 654406 N | Horizontal Field of View: | 53.5° (Planar projection) | Photo Date / Time:                         | N/A  | Hub / Blade tip height:    | 135/220m          | <p>This wireframe is based upon Nextmap25 data with spot heights at 25m intervals and does not precisely model small scale changes in landform or sharp breaks in slope. The wireframe model does not allow for the screening effects of vegetation or buildings. The model of turbine shown is similar to that proposed for the development.</p>  | <p>COPYRIGHT<br/>Ordnance Survey material by permission of<br/>Ordnance Survey on behalf of the Controller<br/>of Her Majesty's Stationary Office © Crown<br/>Copyright. All rights reserved. 2025 Reference<br/>number AC0000808122.</p>  | PROJECT TITLE<br>GLENBURNIE WIND FARM | DRAWING TITLE<br>Viewpoint H3 - Glenburnie, Fort (SM4473) |
|             | Ground Level (mAOD):                 | 319.7m            | Paper Size:               | 841mm x 297mm (Half A1)   | Camera Model and Sensor Format:            | N/A  | Turbines (Left-Right):     | 16,14,13,15,9,7,5 |   |   |                                       |   |
|             | Direction of View:                   | 1                 | Enlargement Factor:       | 150%                      | Lens Make, Model and Focal Length:         | N/A  | Lit turbines (Left-Right): | 16,13,5           |   |   |                                       |   |
|             | Nearest Turbine:                     | 0.9km, T16        | Visualisation Type:       | Type 2                    | Height of Camera Lens above Ground (mAOD): | 1.5m | Right):                    |                   |   |   |                                       |   |
|             |                                      |                   |                           |                           |  |      |                            |                   |   |   |                                       |   |
|             |                                      |                   |                           |                           |  |      |                            |                   |   |   |                                       |   |
|             |                                      |                   |                           |                           |  |      |                            |                   |   |   |                                       |   |
|             |                                      |                   |                           |                           |  |      |                            |                   |   |   |                                       |   |
|             |                                      |                   |                           |                           |  |      |                            |                   |   |   |                                       |   |
|             |                                      |                   |                           |                           |  |      |                            |                   |   |   |                                       |   |
|             |                                      |                   |                           |                           |  |      |                            |                   |   |   |                                       |   |
|             |                                      |                   |                           |                           |  |      |                            |                   |   |   |                                       |   |
|             |                                      |                   |                           |                           |  |      |                            |                   |   |   |                                       |   |
|             |                                      |                   |                           |                           |  |      |                            |                   |   |   |                                       |   |
|             |                                      |                   |                           |                           |  |      |                            |                   |   |   |                                       |   |
|             |                                      |                   |                           |                           |  |      |                            |                   |   |   |                                       |   |
|             |                                      |                   |                           |                           |  |      |                            |                   |   |   |                                       |   |
|             |                                      |                   |                           |                           |  |      |                            |                   |   |   |                                       |   |
|             |                                      |                   |                           |                           |  |      |                            |                   |   |   |                                       |   |
|             |                                      |                   |                           |                           |  |      |                            |                   |   |   |                                       |   |
|             |                                      |                   |                           |                           |  |      |                            |                   |   |   |                                       |   |
|             |                                      |                   |                           |                           |  |      |                            |                   |   |   |                                       |   |
|             |                                      |                   |                           |                           |  |      |                            |                   |   |   |                                       |   |
|             |                                      |                   |                           |                           |  |      |                            |                   |   |   |                                       |   |
|             |                                      |                   |                           |                           |  |      |                            |                   |   |   |                                       |   |
|             |                                      |                   |                           |                           |  |      |                            |                   |   |   |                                       |   |
|             |                                      |                   |                           |                           |  |      |                            |                   |   |   |                                       |   |
|             |                                      |                   |                           |                           |  |      |                            |                   |   |   |                                       |   |
|             |                                      |                   |                           |                           |  |      |                            |                   |   |   |                                       |   |
|             |                                      |                   |                           |                           |  |      |                            |                   |   |   |                                       |   |
|             |                                      |                   |                           |                           |  |      |                            |                   |   |   |                                       |   |
|             |                                      |                   |                           |                           |  |      |                            |                   |   |   |                                       |   |
|             |                                      |                   |                           |                           |  |      |                            |                   |   |   |                                       |   |
|             |                                      |                   |                           |                           |  |      |                            |                   |   |   |                                       |   |
|             |                                      |                   |                           |                           |  |      |                            |                   |   |   |                                       |   |
|             |                                      |                   |                           |                           |  |      |                            |                   |   |   |                                       |   |
|             |                                      |                   |                           |                           |  |      |                            |                   |   |   |                                       |   |
|             |                                      |                   |                           |                           |  |      |                            |                   |   |   |                                       |   |
|             |                                      |                   |                           |                           |  |      |                            |                   |   |   |                                       |   |
|             |                                      |                   |                           |                           |  |      |                            |                   |   |   |                                       |   |
|             |                                      |                   |                           |                           |  |      |                            |                   |   |   |                                       |   |
|             |                                      |                   |                           |                           |  |      |                            |                   |   |   |                                       |   |
|             |                                      |                   |                           |                           |  |      |                            |                   |   |   |                                       |   |
|             |                                      |                   |                           |                           |  |      |                            |                   |   |   |                                       |   |
|             |                                      |                   |                           |                           |  |      |                            |                   |   |   |                                       |   |
|             |                                      |                   |                           |                           |  |      |                            |                   |   |   |                                       |   |
|             |                                      |                   |                           |                           |  |      |                            |                   |   |   |                                       |   |
|             |                                      |                   |                           |                           |  |      |                            |                   |   |   |                                       |   |
|             |                                      |                   |                           |                           |  |      |                            |                   |   |   |                                       |   |
|             |                                      |                   |                           |                           |  |      |                            |                   |   |   |                                       |   |
|             |                                      |                   |                           |                           |  |      |                            |                   |   |   |                                       |   |
|             |                                      |                   |                           |                           |  |      |                            |                   |   |   |                                       |   |
|             |                                      |                   |                           |                           |  |      |                            |                   |   |   |                                       |   |
|             |                                      |                   |                           |                           |  |      |                            |                   |   |   |                                       |   |
|             |                                      |                   |                           |                           |  |      |                            |                   |   |   |                                       |   |
|             |                                      |                   |                           |                           |  |      |                            |                   |   |   |                                       |   |
|             |                                      |                   |                           |                           |  |      |                            |                   |   |   |                                       |   |
|             |                                      |                   |                           |                           |  |      |                            |                   |   |   |                                       |   |
|             |                                      |                   |                           |                           |  |      |                            |                   |   |   |                                       |   |
|             |                                      |                   |                           |                           |  |      |                            |                   |   |   |                                       |   |
|             |                                      |                   |                           |                           |  |      |                            |                   |   |   |                                       |   |
|             |                                      |                   |                           |                           |  |      |                            |                   |   |   |                                       |   |
|             |                                      |                   |                           |                           |  |      |                            |                   |   |   |                                       |   |
|             |                                      |                   |                           |                           |  |      |                            |                   |   |   |                                       |   |
|             |                                      |                   |                           |                           |  |      |                            |                   |   |   |                                       |   |
|             |                                      |                   |                           |                           |  |      |                            |                   |   |   |                                       |   |
|             |                                      |                   |                           |                           |  |      |                            |                   |   |   |                                       |   |
|             |                                      |                   |                           |                           |  |      |                            |                   |   |   |                                       |   |
|             |                                      |                   |                           |                           |  |      |                            |                   |   |   |                                       |   |
|             |                                      |                   |                           |                           |  |      |                            |                   |   |   |                                       |   |
|             |                                      |                   |                           |                           |  |      |                            |                   |   |   |                                       |   |
|             |                                      |                   |                           |                           |  |      |                            |                   |   |   |                                       |   |
|             |                                      |                   |                           |                           |  |      |                            |                   |   |   |                                       |   |
|             |                                      |                   |                           |                           |  |      |                            |                   |   |   |                                       |   |
|             |                                      |                   |                           |                           |  |      |                            |                   |   |   |                                       |   |
|             |                                      |                   |                           |                           |  |      |                            |                   |   |   |                                       |   |
|             |                                      |                   |                           |                           |  |      |                            |                   |   |   |                                       |   |
|             |                                      |                   |                           |                           |  |      |                            |                   |   |   |                                       |   |
|             |                                      |                   |                           |                           |  |      |                            |                   |   |   |                                       |   |
|             |                                      |                   |                           |                           |  |      |                            |                   |   |   |                                       |   |
|             |                                      |                   |                           |                           |  |      |                            |                   |   |   |                                       |   |
|             |                                      |                   |                           |                           |  |      |                            |                   |   |   |                                       |   |
|             |                                      |                   |                           |                           |  |      |                            |                   |   |   |                                       |   |
|             |                                      |                   |                           |                           |  |      |                            |                   |   |   |                                       |   |
|             |                                      |                   |                           |                           |  |      |                            |                   |   |   |                                       |   |
|             |                                      |                   |                           |                           |  |      |                            |                   |   |   |                                       |   |
|             |                                      |                   |                           |                           |  |      |                            |                   |   |   |                                       |   |

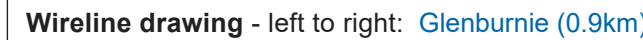


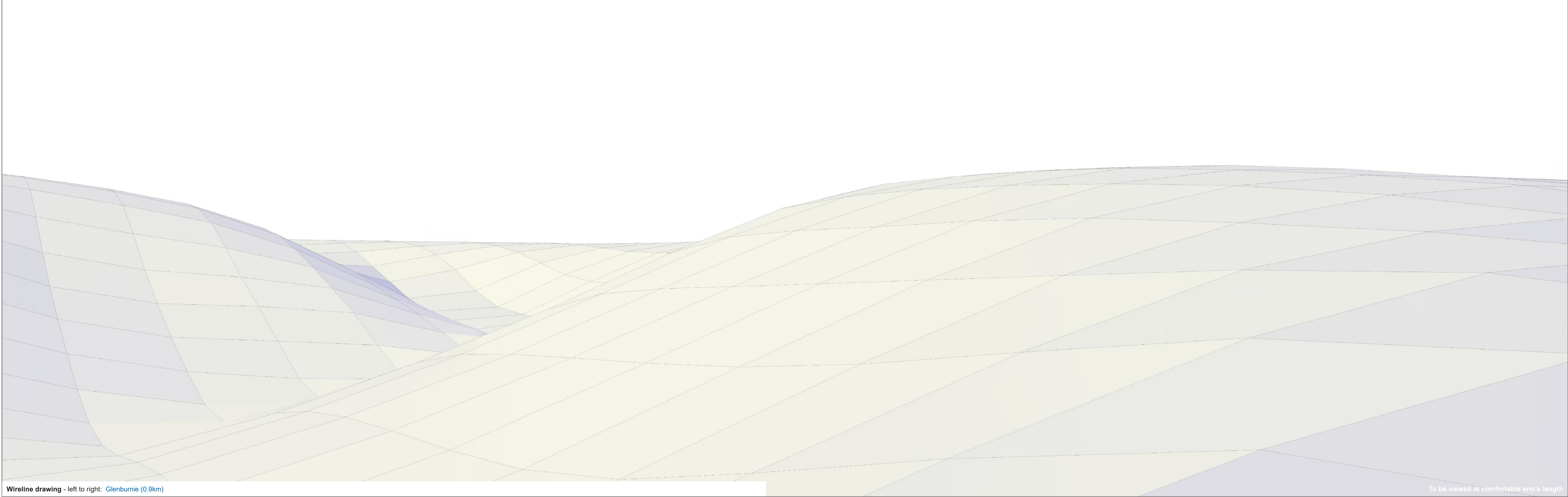




Wireline drawing - left to right: [Glenburnie \(0.9km\)](#)

|           |                                      |                   |                           |                           |  |      |   |                   |   |
|-----------|--------------------------------------|-------------------|---------------------------|---------------------------|--|------|---|-------------------|---|
| LDĀDESIGN | Camera Location (OS Grid Reference): | 354473 E 654406 N | Horizontal Field of View: | 53.5° (Planar projection) | Photo Date / Time:                         | N/A  | Hub / Blade tip height:   | 135/220m          | <p>This wireframe is based upon Nextmap25 data with spot heights at 25m intervals and does not precisely model small scale changes in landform or sharp breaks in slope. The wireframe model does not allow for the screening effects of vegetation or buildings. The model of turbine shown is similar to that proposed for the development.</p>  |
|           | Ground Level (mAOD):                 | 319.7m            | Paper Size:               | 841mm x 297mm (Half A1)   | Camera Model and Sensor Format:            | N/A  | Turbines (Left-Right):  | 16,14,13,15,9,7,5 |   |
|           | Direction of View:                   | 4                 | Enlargement Factor:       | 150%                      | Lens Make, Model and Focal Length:         | N/A  | Lit turbines (Left-Right):  | 16,13,5           |   |
|           | Nearest Turbine:                     | 0.9km, T16        | Visualisation Type:       | Type 2                    | Height of Camera Lens above Ground (mAOD): | 1.5m |   |                   |   |
|           |                                      |                   |                           |                           |  |      |   |                   |   |
|           |                                      |                   |                           |                           |  |      | COPYRIGHT<br>Ordnance Survey material by permission of<br>Ordnance Survey on behalf of the Controller<br>of Her Majesty's Stationary Office © Crown<br>Copyright. All rights reserved. 2025 Reference<br>number AC0000808122. |                   |   |
|           |                                      |                   |                           |                           |  |      |    |                   |   |
|           |                                      |                   |                           |                           |  |      | PROJECT TITLE<br>GLENBURNIE WIND FARM   |                   |   |
|           |                                      |                   |                           |                           |  |      | DRAWING TITLE<br>Viewpoint H3 - Glenburnie, Fort (SM4473)   |                   |   |
|           |                                      |                   |                           |                           |  |      | AEI FIGURE 7.7      DATE    02/04/2025      Sheet 8 of 16   |                   |   |





Wireline drawing - left to right: [Glenburnie \(0.9km\)](#)



To be viewed at comfortable arm's length

|           |  |                      |   |                                     |                          |                            |                        |                                     |  |   |                                  |  |                                    |  |  |  |  |                                       |   |
|-----------|--|----------------------|---|-------------------------------------|--------------------------|----------------------------|------------------------|-------------------------------------|--|---|----------------------------------|--|------------------------------------|--|--|--|--|---------------------------------------|---|
| LDĀDESIGN | Camera Location (OS Grid Reference): 354473 E 654406 N |                      | Horizontal Field of View: 53.5° (Planar projection) | Paper Size: 841mm x 297mm (Half A1) | Enlargement Factor: 150% | Visualisation Type: Type 2 | Photo Date / Time: N/A | Camera Model and Sensor Format: N/A | Lens Make, Model and Focal Length: N/A | Height of Camera Lens above Ground (mAOD): 1.5m | Hub / Blade tip height: 135/220m | Turbines (Left-Right): 16,14,13,15,9,7,5 | Lit turbines (Left-Right): 16,13,5 | This wireframe is based upon Nextmap25 data with spot heights at 25m intervals and does not precisely model small scale changes in landform or sharp breaks in slope. The wireframe model does not allow for the screening effects of vegetation or buildings. The model of turbine shown is similar to that proposed for the development. |  | COPYRIGHT<br>Ordnance Survey material by permission of Ordnance Survey on behalf of the Controller of Her Majesty's Stationary Office © Crown Copyright. All rights reserved. 2025 Reference number AC000808122. |  | PROJECT TITLE<br>GLENBURNIE WIND FARM | DRAWING TITLE<br>Viewpoint H3 - Glenburnie, Fort (SM4473) |
|           | Ground Level (mAOD): 319.7m                            | Direction of View: 6 | Nearest Turbine: 0.9km, T16                         |                                     |                          |                            |                        |                                     |  |   |                                  |  |                                    |  |  |  |  |                                       |   |



Photomontage



To be viewed at comfortable arm's length

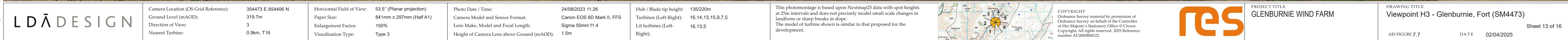
|           |  |  |  |  |  |   |  |   |  |  |   |  |   |                                       |   |                    |                |
|-----------|--|--|--|--|--|---|--|---|--|--|---|--|---|---------------------------------------|---|--------------------|----------------|
| LDĀDESIGN |  | Camera Location (OS Grid Reference):<br>Ground Level (mAOD):<br>Direction of View:<br>Nearest Turbine: | 354473 E 654406 N<br>319.7m<br>1<br>0.9km, T16 | Horizontal Field of View:<br>Paper Size:<br>Enlargement Factor:<br>Visualisation Type: | 53.5° (Planar projection)<br>841mm x 297mm (Half A1)<br>150%<br>Type 3 | Photo Date / Time:<br>Camera Model and Sensor Format:<br>Lens Make, Model and Focal Length:<br>Height of Camera Lens above Ground (mAOD): | 24/08/2023 11:26<br>Canon EOS 6D Mark II, FFS<br>Sigma 50mm f1.4<br>1.5m | Hub / Blade tip height:<br>Turbines (Left-Right):<br>Lit turbines (Left-Right): | 135/220m<br>16,14,13,15,9,7,5<br>16,13,5 | This photomontage is based upon Nextmap25 data with spot heights at 25m intervals and does not precisely model small scale changes in landform or sharp breaks in slope. The model of turbine shown is similar to that proposed for the development. |  | <p>COPYRIGHT</p> <p>Ordnance Survey material by permission of Ordnance Survey on behalf of the Controller of Her Majesty's Stationary Office © Crown Copyright. All rights reserved. 2025 Reference number AC0000808122.</p> |  | PROJECT TITLE<br>GLENBURNIE WIND FARM | DRAWING TITLE<br>Viewpoint H3 - Glenburnie, Fort (SM4473)<br><br>AEI FIGURE 7.7 | DATE<br>02/04/2025 | Sheet 11 of 16 |
|-----------|--|--|--|--|--|---|--|---|--|--|---|--|---|---------------------------------------|---|--------------------|----------------|



Photomontage

To be viewed at comfortable arm's length


|           |  |  |  |  |  |   |  |   |  |  |   |   |   |                                       |   |                    |                |
|-----------|--|--|--|--|--|---|--|---|--|--|---|---|---|---------------------------------------|---|--------------------|----------------|
| LDĀDESIGN |  | Camera Location (OS Grid Reference):<br>Ground Level (mAOD):<br>Direction of View:<br>Nearest Turbine: | 354473 E 654406 N<br>319.7m<br>2<br>0.9km, T16 | Horizontal Field of View:<br>Paper Size:<br>Enlargement Factor:<br>Visualisation Type: | 53.5° (Planar projection)<br>841mm x 297mm (Half A1)<br>150%<br>Type 3 | Photo Date / Time:<br>Camera Model and Sensor Format:<br>Lens Make, Model and Focal Length:<br>Height of Camera Lens above Ground (mAOD): | 24/08/2023 11:26<br>Canon EOS 6D Mark II, FFS<br>Sigma 50mm f1.4<br>1.5m | Hub / Blade tip height:<br>Turbines (Left-Right):<br>Lit turbines (Left-Right): | 135/220m<br>16,14,13,15,9,7,5<br>16,13,5 | This photomontage is based upon Nextmap25 data with spot heights at 25m intervals and does not precisely model small scale changes in landform or sharp breaks in slope. The model of turbine shown is similar to that proposed for the development. |  | COPYRIGHT<br>Ordnance Survey material by permission of<br>Ordnance Survey on behalf of the Controller<br>of Her Majesty's Stationary Office © Crown<br>Copyright. All rights reserved. 2025 Reference<br>number AC0000808122. |  | PROJECT TITLE<br>GLENBURNIE WIND FARM | DRAWING TITLE<br>Viewpoint H3 - Glenburnie, Fort (SM4473)<br><br>AEI FIGURE 7.7 | DATE<br>02/04/2025 | Sheet 12 of 16 |
|-----------|--|--|--|--|--|---|--|---|--|--|---|---|---|---------------------------------------|---|--------------------|----------------|





Photomontage



To be viewed at comfortable arm's length

|                      |  |  |  |  |  |   |  |   |  |   |   |   |                |                                       |   |                    |                |
|----------------------|--|--|--|--|--|---|--|---|--|---|---|---|----------------|---------------------------------------|---|--------------------|----------------|
| <div>LD̂DESIGN</div> |  | Camera Location (OS Grid Reference):<br>Ground Level (mAOD):<br>Direction of View:<br>Nearest Turbine: | 354473 E 654406 N<br>319.7m<br>4<br>0.9km, T16 | Horizontal Field of View:<br>Paper Size:<br>Enlargement Factor:<br>Visualisation Type: | 53.5° (Planar projection)<br>841mm x 297mm (Half A1)<br>150%<br>Type 3 | Photo Date / Time:<br>Camera Model and Sensor Format:<br>Lens Make, Model and Focal Length:<br>Height of Camera Lens above Ground (mAOD): | 24/08/2023 11:26<br>Canon EOS 6D Mark II, FFS<br>Sigma 50mm f1.4<br>1.5m | Hub / Blade tip height:<br>Turbines (Left-Right):<br>Lit turbines (Left-Right): | 135/220m<br>16,14,13,15,9,7,5<br>16,13,5 | This photomontage is based upon Nextmap25 data with spot heights at 25m intervals and does not precisely model small scale changes in landform or sharp breaks in slope.<br>The model of turbine shown is similar to that proposed for the development. |  | <div>COPYRIGHT<br/>Ordnance Survey material by permission of<br/>Ordnance Survey on behalf of the Controller<br/>of Her Majesty's Stationary Office © Crown<br/>Copyright. All rights reserved. 2025 Reference<br/>number AC0000808122.</div> | <div>res</div> | PROJECT TITLE<br>GLENBURNIE WIND FARM | DRAWING TITLE<br>Viewpoint H3 - Glenburnie, Fort (SM4473)<br><br>AEI FIGURE 7.7 | DATE<br>02/04/2025 | Sheet 14 of 16 |
|----------------------|--|--|--|--|--|---|--|---|--|---|---|---|----------------|---------------------------------------|---|--------------------|----------------|



Photomontage

To be viewed at comfortable arm's length

|           |                                      |                   |                           |                           |  |                           |                            |                   |  |   |   |   |                                       |   |
|-----------|--------------------------------------|-------------------|---------------------------|---------------------------|--|---------------------------|----------------------------|-------------------|--|---|---|---|---------------------------------------|---|
| LDĀDESIGN | Camera Location (OS Grid Reference): | 354473 E 654406 N | Horizontal Field of View: | 53.5° (Planar projection) | Photo Date / Time:                         | 24/08/2023 11:26          | Hub / Blade tip height:    | 135/220m          | This photomontage is based upon Nextmap25 data with spot heights at 25m intervals and does not precisely model small scale changes in landform or sharp breaks in slope. The model of turbine shown is similar to that proposed for the development. |  | COPYRIGHT<br>Ordnance Survey material by permission of Ordnance Survey on behalf of the Controller of Her Majesty's Stationary Office © Crown Copyright. All rights reserved. 2025 Reference number AC0000808122. |  | PROJECT TITLE<br>GLENBURNIE WIND FARM | DRAWING TITLE<br>Viewpoint H3 - Glenburnie, Fort (SM4473) |
|           | Ground Level (mAOD):                 | 319.7m            | Paper Size:               | 841mm x 297mm (Half A1)   | Camera Model and Sensor Format:            | Canon EOS 6D Mark II, FFS | Turbines (Left-Right):     | 16,14,13,15,9,7,5 |  |   |   |   |                                       |   |
|           | Direction of View:                   | 5                 | Enlargement Factor:       | 150%                      | Lens Make, Model and Focal Length:         | Sigma 50mm f1.4           | Lit turbines (Left-Right): | 16,13,5           |  |   |   |   |                                       |   |
|           | Nearest Turbine:                     | 0.9km, T16        | Visualisation Type:       | Type 3                    | Height of Camera Lens above Ground (mAOD): | 1.5m                      |                            |                   |  |   |   |   |                                       |   |

